

# The Fertile Earth Feeder

## Product Specifications Document



**The Fertile Earth Feeder**  
An all-mechanical fertigation device

*Less Water*

*Fewer Chemicals*

*Better Results!*



883 West Baxter Drive  
South Jordan, UT 84095

Phone: 801-327-7211  
Toll Free: 877-88-EARTH

Fax: 801-254-5641

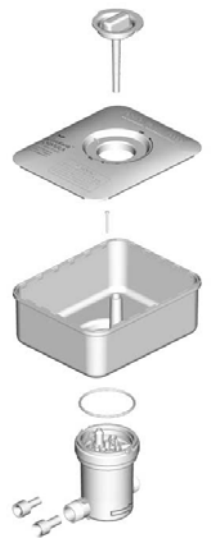
Email: sales@fertileearth.com  
www.FertileEarth.com

### Product Description

The Fertile Earth Feeder is a commercial-grade fertigation device that slowly delivers micro amounts of fertilizer to an entire landscape or turf system through a new or existing irrigation system. The Fertile Earth Feeder is an all-mechanical, water-powered device that automatically regulates fertilizer injection based on water flow. The device can be used on pressurized and non-pressurized lines and is suitable any irrigation system equipped with 1" service lines or smaller.

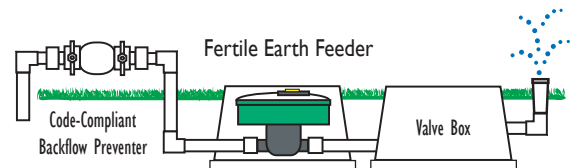
### Product Specifications

- **Dimensions:** 8.75" x 10.5" x 10.5"
- **Standard Reservoir:** 1 gallon detachable tank.
- **External Reservoirs:** Supported via 1/2" poly pipe attachment.
- **Coverage Capacity :** Up to 10,000 sq. ft. per month (per device)
- **Pipe Fittings:** 1" National Plumbing Thread (NPT) Standard
- **Adaptability:** : PVC, poly pipe, drip, etc. (adapters not included)
- **Maximum Operating Pressure:** 125 PSI
- **Minimum Operating Pressure:** 25 PSI
- **Operating Flow Range:** 1.5-50 GPM (gallons per minute)
- **Compatible Fertilizer:** Fertile Earth Formula™ Plant Foods.
- **Protective Enclosure:** Standard valve cover box (required, not included).
- **Backflow Prevention:** Required for potable water systems (not included).
- **Installation Location:** Pressurized or non-pressurized lines (see diagram below).
- **Fertilization Application Rate:** 1 gallon of fertilizer per 5,000 sq ft. per month.
- **Injection Rates & Pressure Loss:** See table below.



Nozzle	Flow Range	Injection Rate	PSI Loss*
Black-High Flow	10-50 GPM	1:10,000 - 100 ppm	< 2
Blue-Moderate Flow	4-30 GPM	1:8,000 - 125 ppm	< 5
Red-Low Flow	2-20 GPM	1:6,000 - 166 ppm	< 10
Yellow-Ultra Low Flow (used for drip systems only)	1-12 GPM	1:4,000 - 250 ppm	< 18

\*Pressure loss will vary depending on the combination of water flow and water pressure.



Code-compliant back-flow prevention is required before installation.  
To fertilize an entire landscape, install the Fertile Earth Feeder between the backflow device and first valve box. To feed a targeted area, install the device after the valve (on the non-pressurized side of the line) followed by a check valve to prevent siphoning of fertilizer as the line drains.